

902 CS

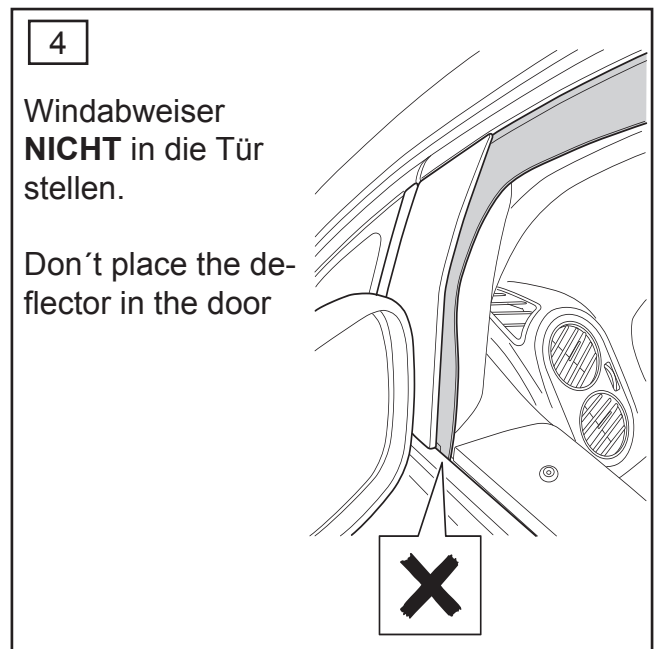
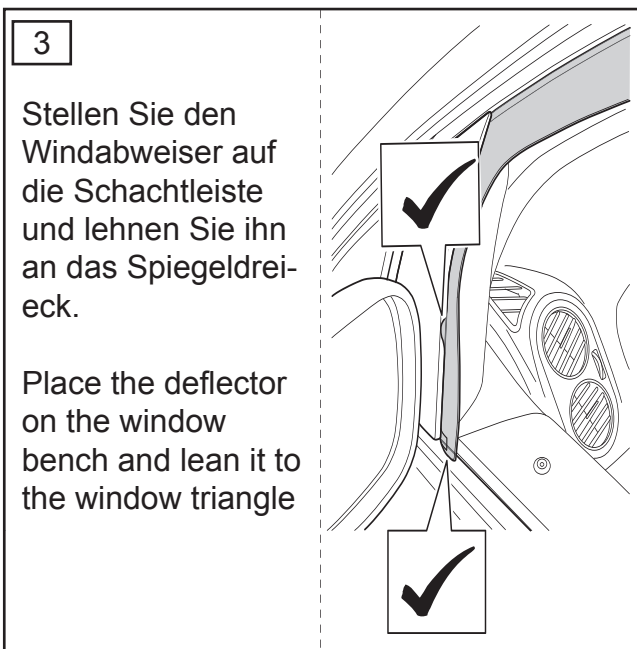
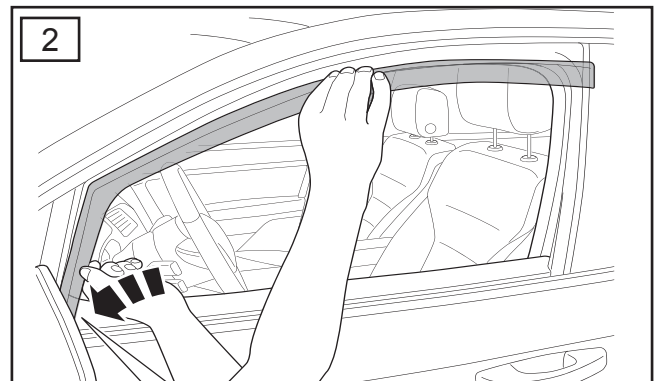
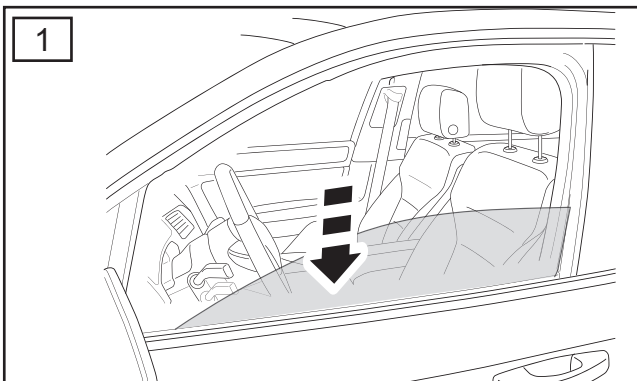
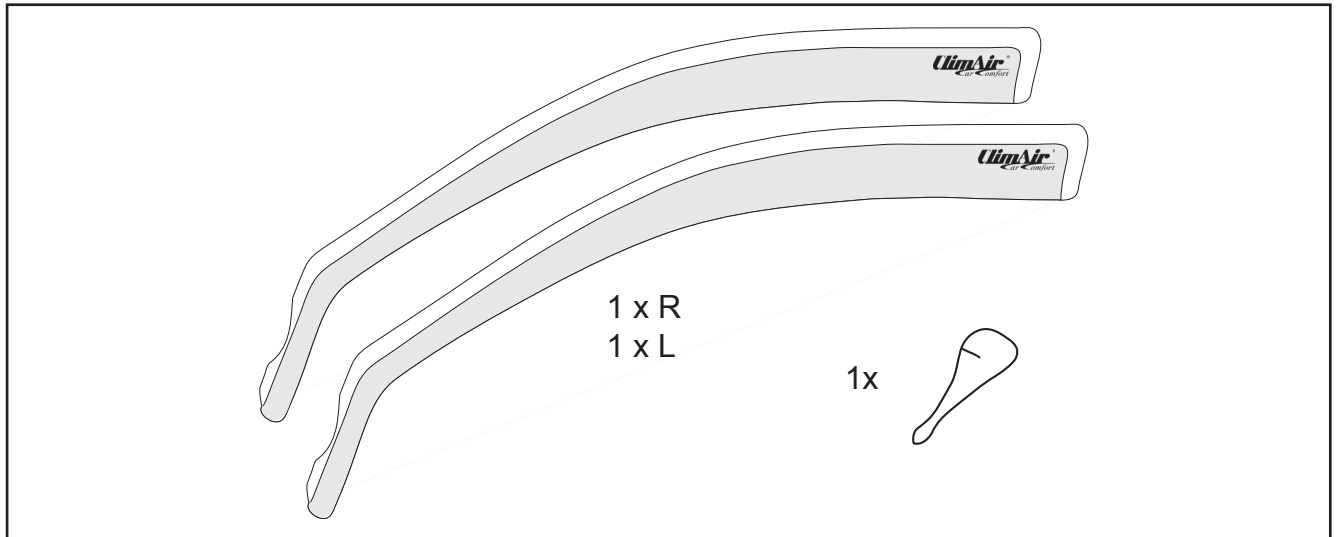
(D) Einbauanleitung

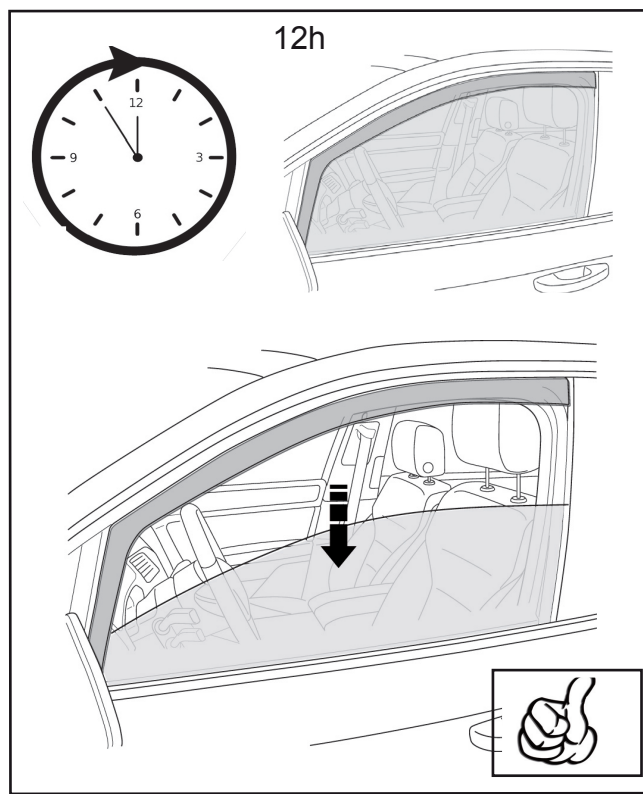
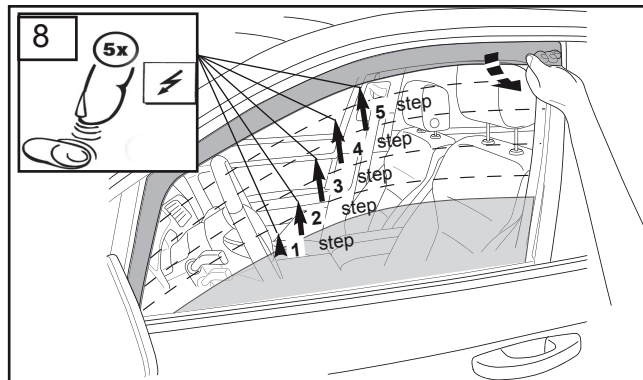
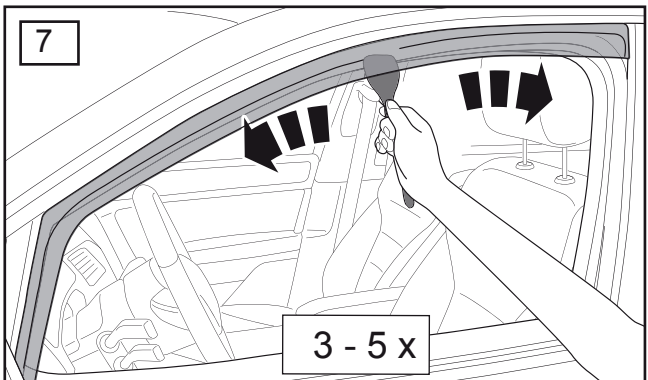
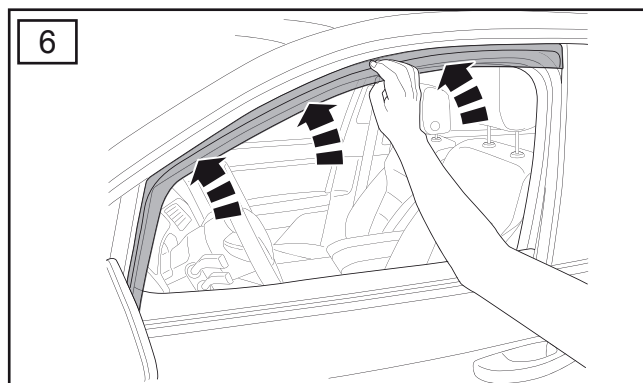
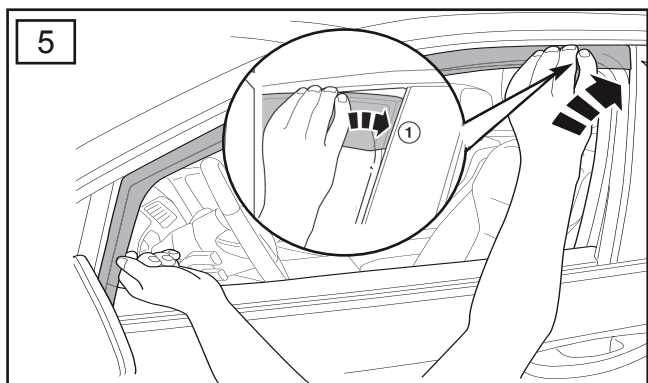
(GB) Installation instructions

(F) Consignes de montage

(E) Instrucciones de montaje

(RUS) Инструкция по монтажу и установке





Weitere Informationen zum Einbau finden Sie unter:
 For more information on installation, see:
 Pour plus d'informations sur l'installation, voir:
 Para obtener más información sobre la instalación, vea:
 Для получения дополнительной информации по установке, см.: